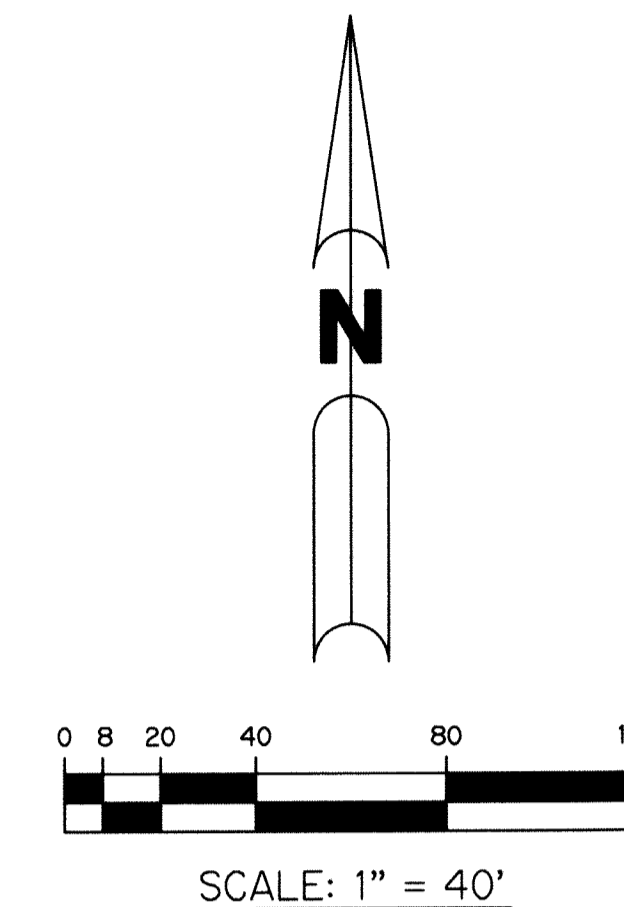


HYDER AGR-PUD SOUTH PLAT EIGHT

BEING A REPLAT OF ALL OF TRACT "B", HYDER AGR-PUD SOUTH PLAT SEVEN, AS RECORDED IN PLAT BOOK 131, PAGES 47 THROUGH 59, PUBLIC RECORDS OF PALM BEACH COUNTY, FLORIDA, LYING IN SECTION 31, TOWNSHIP 46 SOUTH, RANGE 42 EAST, PALM BEACH COUNTY, FLORIDA.

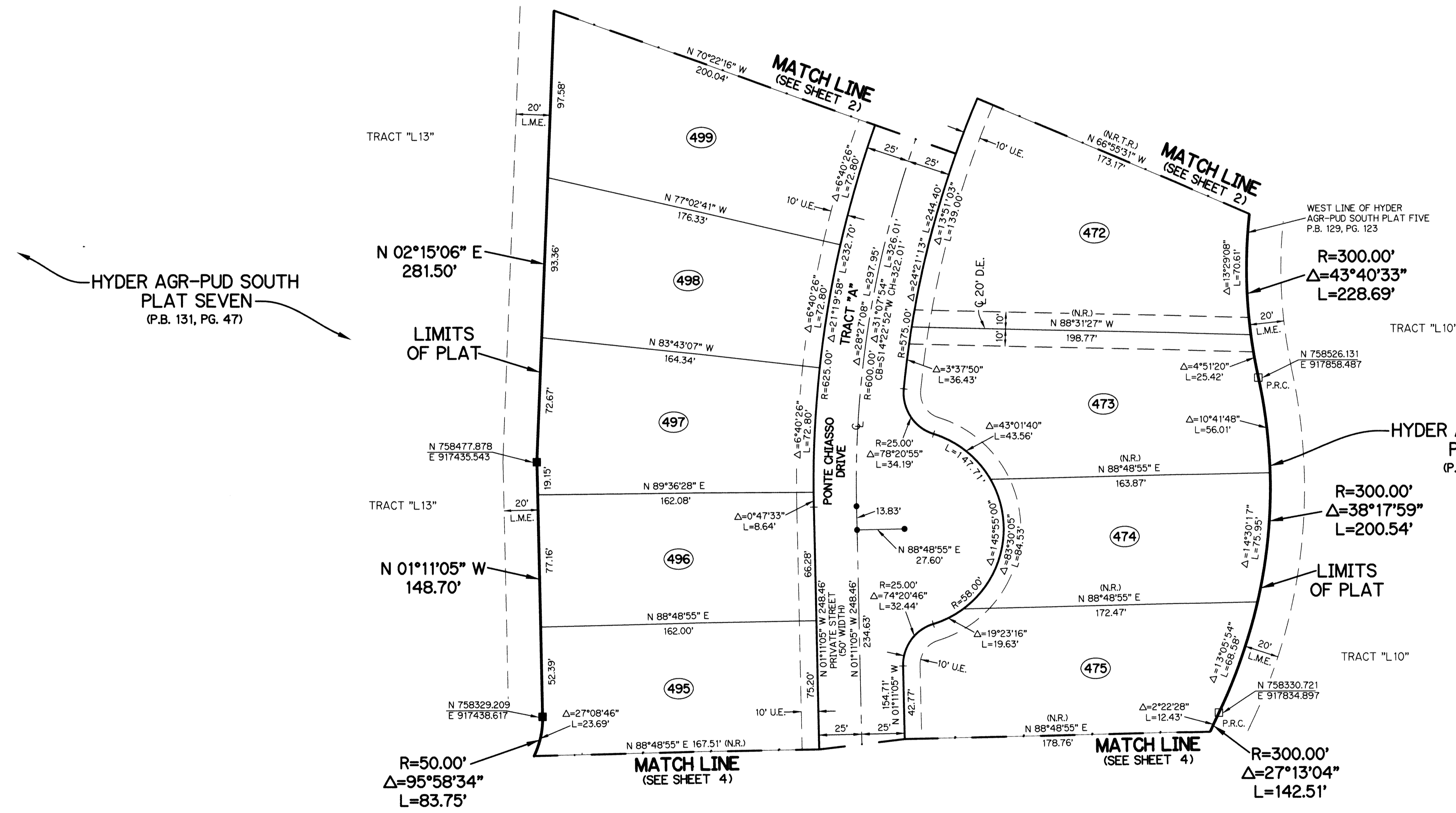
SHEET 3 OF 5

161



LEGEND:

- - SET PERMANENT REFERENCE MONUMENT
- 4"x4" CONCRETE MONUMENT WITH 1.5" DISK STAMPED L.B. #7741 (UNLESS OTHERWISE NOTED)
- - FOUND PERMANENT REFERENCE MONUMENT
- 4"x4" CONCRETE MONUMENT WITH 1.5" DISK STAMPED L.B. #7741
- - SET PERMANENT CONTROL POINT
- NAIL WITH 1.25" DISK STAMPED L.B. #7741
- - FOUND PERMANENT CONTROL POINT
- NAIL WITH 1.25" DISK STAMPED L.B. #7741
- AGR - AGRICULTURAL
- Δ - DELTA ANGLE
- B.E. - BUFFER EASEMENT
- BLK - BLOCK
- CB - CHORD BEARING
- CH - CHORD DISTANCE
- C - CENTERLINE
- D.B. - DEED BOOK
- D.E. - PRIVATE DRAINAGE EASEMENT
- F.P.L. - FLORIDA POWER & LIGHT
- L - ARC LENGTH
- L.A.E. - LIMITED ACCESS EASEMENT
- LB - LICENSED BUSINESS
- L.M.A.E. - LAKE MAINTENANCE ACCESS EASEMENT
- L.M.E. - LAKE MAINTENANCE EASEMENT
- L.W.D.D. - LAKE WORTH DRAINAGE DISTRICT
- NR - NOT RADIAL
- NR.T.R. - NOT RADIAL TO REAR LINE
- N.T. - NON-TANGENT
- N.T.S. - NOT TO SCALE
- O.R.B. - OFFICIAL RECORD BOOK
- O.E. - MAINTENANCE & ROOF OVERHANG EASEMENT
- P.B.C.O. - PALM BEACH COUNTY
- P.B.C.U.E. - PALM BEACH COUNTY UTILITY EASEMENT
- P.B. - PLAT BOOK
- P.C. - POINT OF CURVATURE
- P.C.C. - POINT OF COMPOUND CURVATURE
- P.C.P. - PERMANENT CONTROL POINT
- P.D.E. - PUBLIC DRAINAGE EASEMENT
- PG. - PAGE
- PGS. - PAGES
- P.O.B. - POINT OF BEGINNING
- P.N.R.I. - POINT OF NON-RADIAL INTERSECTION
- P.N.T.I. - POINT OF NON-TANGENT INTERSECTION
- P.O.C. - POINT OF COMMENCEMENT
- P.O.I. - POINT OF INTERSECTION
- P.R.C. - POINT OF REVERSE CURVATURE
- P.R.I. - POINT OF RADIAL INTERSECTION
- P.S.M. - PROFESSIONAL SURVEYOR AND MAPPER
- P.T. - POINT OF TANGENCY
- PUD - PLANNED UNIT DEVELOPMENT
- R - RADIUS
- RAD - RADIAL
- R/W - RIGHT-OF-WAY
- R.D. & D. - ROAD, DYKE AND DITCH RESERVATION
- SIRC - SET 5/8" IRON ROD & CAP STAMPED "PRM LB7741"
- SN&D - SET MAGNETIC NAIL & DISK STAMPED "PRM LB7741"
- S.T. - SURVEY TIE
- TYP. - TYPICAL
- U.E. - UTILITY EASEMENT
- N=780000.00 - STATE PLANE COORDINATE VALUE
- E=930000.00

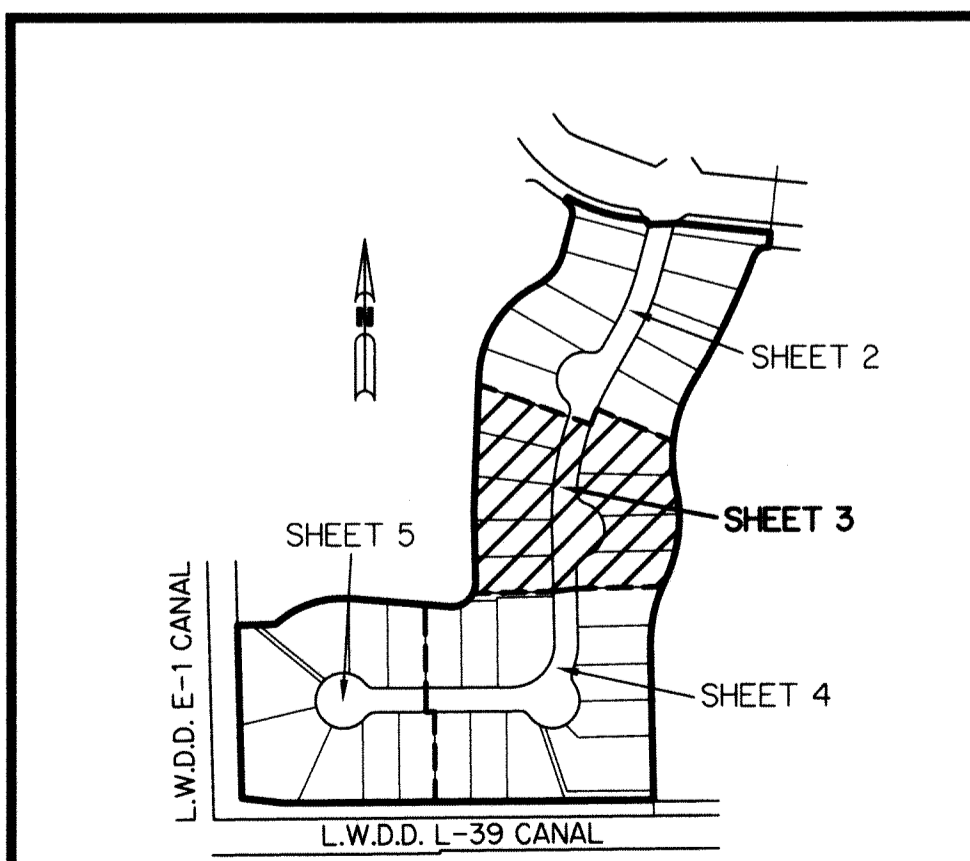


HYDER AGR-PUD SOUTH PLAT SEVEN (P.B. 131, PG. 47)

HYDER AGR-PUD SOUTH PLAT FIVE (P.B. 129, PG. 123)

THIS INSTRUMENT WAS PREPARED BY
 PERRY C. WHITE, P.S.M. 4213, STATE OF FLORIDA
 SAND & HILLS SURVEYING, INC.
 8461 LAKE WORTH ROAD, SUITE 410
 LAKE WORTH, FLORIDA 33467
 LB-7741

NOTES:
 COORDINATES SHOWN ARE GRID COORDINATES DATUM = NAD 83 (1990 ADJUSTMENT)
 ZONE = FLORIDA EAST ZONE
 LINEAR UNIT = U.S. SURVEY FEET
 COORDINATE SYSTEM = 1983 STATE PLANE TRANSVERSE MERCATOR PROJECTION
 ALL DISTANCES ARE GROUND (UNLESS OTHERWISE NOTED)
 SCALE FACTOR = 1.00002337
 PLAT BEARING = GRID BEARING
 GROUND DISTANCE X SCALE FACTOR = GRID DISTANCE



KEY MAP
 N.T.S.

HYDER AGR-PUD SOUTH PLAT EIGHT

SH0261 SHEET 3 OF 5